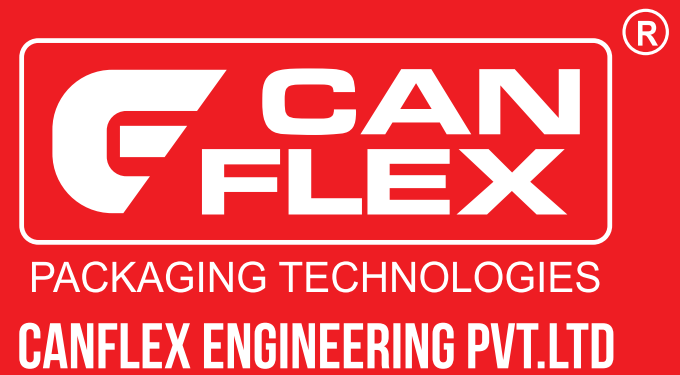


ISO   
9001:2008  
REGISTERED



“ALL PRODUCTS GET BETTER WITH ...  
CANFLEX PACKAGING SOLUTIONS”

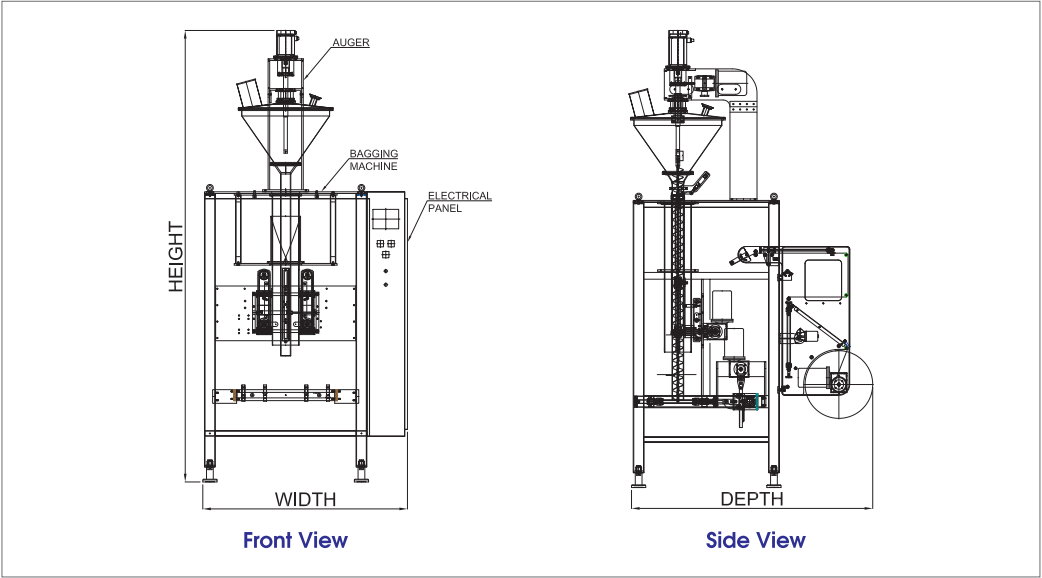
# Powder Packing Machine

Cannon - PP is useful for dosing of any fine powder with servo motor driven, fine adjustment Auger Screw filling system with PLC touch screen and tool free changeover systems that are user friendly.

Packaging is done in a mechanically operated vertical Form, Fill and Seal machine that will fill & Seal in any laminated/ Co-extruded film in the style of center seal, pillow/gauzete /flat bottom pouch.

Our machines are fabricated in heavy duty tubular structure made of Stainless Steel/Mild Steel PU coating for a functional world class aesthetic finish. The machine body covers are made by CNC laser cut technology.

## Dimensions



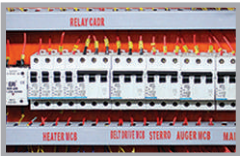
## Technical Data

Description	100PP	1000PP	5000PP
Electricity	3 Phase, 415V	3 Phase, 415V	3 Phase, 415V
Peak Power Rating	5.25 KW	6.53 KW	10 KW
Power Consumption	1.2 KW/hr	2 KW/hr	4 KW/hr
Air Consumption	2 c/m @ 6kg/cm2	2 CFM	3 CFM
Capacity	3000 Packs/hr depends upon product nature	2500-3000 Pouches per hour	1500 p/h for 5 Kg 2100 p/h for 2 Kg 2700 p/h for 1 Kg
Film Thickness	50-80 Microns	75-100 Microns	75-150 Microns
Max film width & length of pouch	280 x 140	500 x 220	650 x 375
Height	2715 mm	2715 mm	4000 mm
Width	1000 mm	1100 mm	1500 mm
Depth	1910 mm	1910 mm	2000 mm
Weight	600 Kgs (approx)	1200 Kgs (approx)	1800 Kgs (approx)

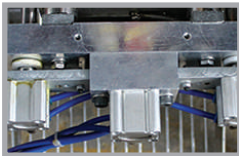
## Features



Modular Former



Electrical Panel



Pneumatic Batch Cutting



Pneumatic Mandrill

## One Stop Solutions

Customised Accessories Like [Conveyer](#), [Secondary Packing](#) and [Other related things](#) are available.



CANNON-G

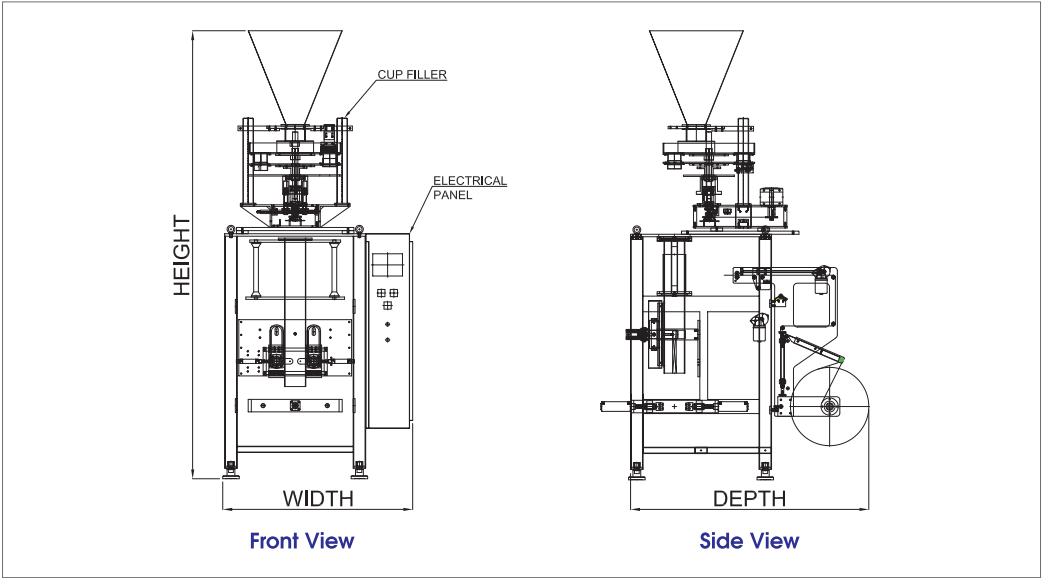
# Granules Packing Machine

Cannon - G is useful for dosing of any granular sized particles in telescopic volumetric adjustable cups to measure different bulk density products with fine least count adjustment facility and with a user friendly PLC touch screen.

Packaging is done in a mechanically operated vertical Form, Fill and Seal machine that will fill & Seal in any laminated/Co-extruded film in the style of center seal, pillow/gauzete /flat bottom pouch.

Our machines are fabricated in heavy duty tubular structure made of Stainless Steel/Mild Steel PU coating for a functional and world class aesthetic finish. The machine parts are built in laser cut technology CNC operated environment.

## Dimensions



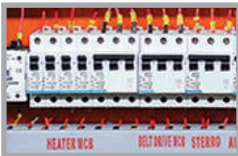
## Technical Data

Description	100G	1000G	5000G
Electricity	3 Phase, 415V	3 Phase, 415V	3 Phase, 415V
Peak Power Rating	3.75 KW	4.5 KW	6.07 KW
Power Consumption	1.2 KW/hr	2 KW/hr	4 KW/hr
Air Consumption	2 c/m @ 6kg/cm2	2 CFM	3 CFM
Capacity	3000 Packs/hr depends upon product nature	2500-3000 Pouches per hour	1500 p/h for 5 Kg 2100 p/h for 2 Kg 2700 p/h for 1 Kg
Film Thickness	50-80 Microns	75-100 Microns	75-150 Microns
Max film width & length of pouch	280 x 140	500 x 220	650 x 375
Height	2715 mm	2715 mm	4000 mm
Width	1000 mm	1100 mm	1500 mm
Depth	1910 mm	1910 mm	2000 mm
Weight	600 Kgs (approx)	1200 Kgs (approx)	1800 Kgs (approx)

## Features



Modular Former



Electrical Panel



Pneumatic Batch Cutting



Pneumatic Mandrill

## One Stop Solutions

Customised Accessories Like **Conveyer, Secondary Packing and Other related things** are available.

CANFLEX ENGINEERING PVT. LTD.

# Combination multi head weigh filler

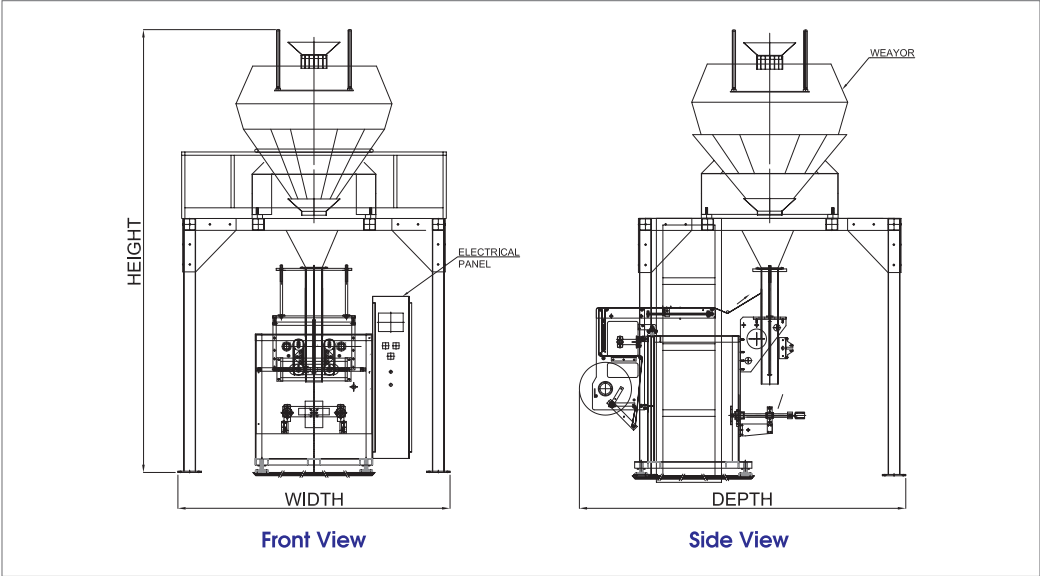
Cannon - MW is used where accurate weight of any uneven or easy to break product needs to be packed. The weighing is done by a reputed Combination Multi Head Weigher of 10/14/24 weighing stations for different speeds and fitted with a user friendly PLC touch Screen.

Packaging is done in a mechanically operated vertical Form, Fill and Seal machine that will fill & Seal in any laminated/Co-extruded film in the style of center seal, pillow/gauzete /flat bottom pouch.

Our machines are fabricated in heavy duty tubular structure made of Stainless Steel/Mild Steel PU coating for a functional and world class aesthetic finish. The machine parts are built in laser cut technology CNC operated environment.



## Dimensions



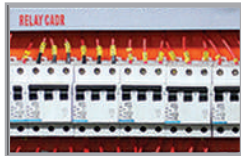
## Technical Data

Description	1000 4LW	1000 10MW	1000 14MW
Electricity	3 Phase, 415V	3 Phase, 415V	3 Phase, 415V
Peak Power Rating	4 KW / hr	7.28 KW	9.32 KW
Power Consumption	2 KW	3 KW/hr	4 KW/hr
Air Consumption	3-4 CFM	5 CFM	5 CFM
Capacity	1500-3000 Packs/hr depends upon products nature/volume	2500-3000 Pouches per hour	1500 p/h for 5 Kg 2100 p/h for 2 Kg 2700 p/h for 1 Kg
Film Thickness	50-80 Microns	75-100 Microns	75-150 Microns
Pouch Dimensions	280 x 140	500 x 220	650 x 375
Height	2715 mm	3000 mm	3000 mm
Width	1000 mm	1100 mm	1500 mm
Depth	1910 mm	2000 mm	2500 mm
Weight	750 Kgs (approx)	1200 Kgs (approx)	2200 Kgs (approx)

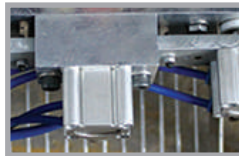
## Features



Modular Former



Electrical Panel



Pneumatic Batch Cutting



Pneumatic Mandrill

## One Stop Solutions

Customised Accessories Like [Conveyer](#), [Secondary Packing](#) and [Other related things](#) are available.



“**CANFLEX PACKAGING SOLUTIONS**  
**CREATE UNRIVALLED BEST IMPRESSION**  
**THE VERY FIRST TIME AND EVERY TIME**”

## Technology Partners



**SIEMENS**

**OMRON**



**FESTO**



**Lenze**





## Head Office

### ■ Canflex Engineering Pvt. Ltd.

P.B. No.: 1919, D. No.: 7-2-C8 / A & C33 / A,  
Industrial Estate, Sanathnagar,  
Hyderabad - 500 018, Telangana, India.

■ Fax : +(91)-(40)-23813884

■ E-mail : [info@cannonindia.com](mailto:info@cannonindia.com)

■ Web : [www.cannonindia.com](http://www.cannonindia.com)  
[www.pouchpackagingmachine.com](http://www.pouchpackagingmachine.com)

## Contact Us

■ Mobile : +(91)-984-862-2825  
+(91)-984-818-4590

■ Phone : +(91)-(04)-2371 2233  
+(91)-(40)-2371 6699

